

Wall-mounted air intake/exhaust vent

UELA



Description

Depending on the specific application version, UELA components can serve as air intake vents or air exhaust vents in mechanical or gravity ventilation systems with heat recovery. The vents feature a wire mesh on the inside to prevent the ingress of insects. All vents have a rubber seal and fitting clamps for easy installation. The outer ring has 2 installation holes. The UELA components provide a highly aesthetic finish and a long service life. The product is suitable for outdoor and indoor use.

Available materials — Product code examples

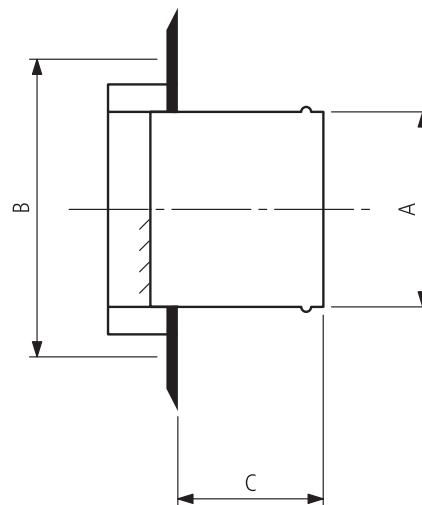
UELA -...- polished stainless steel

Product code example

Product code: **UELA - aaa**

type _____
 Ød _____

Dimensions



Ød (mm)	A (mm)	B (mm)	C (mm)
100	97	133	52
125	120	165	52
150	145	192	62
160	155	192	62
200	195	253	62