

SIRL



Description

The silencers are delivered with the SPIRAL® system seals in the standard version. The diameter sizes $d_1 > 315$ mm require ordering the NSL male couplings which need to be installed in the silencer before connecting the silencer to the ductwork. The male fittings are available separately. They are not delivered with the silencers. Rock wool thickness inside the silencer:
100 mm for SIRL-100 - depends on the outer cladding size.
150 mm for SIRL-150 - depends on the outer cladding size.

Insulation:

Insulation material: rock wool.

Insulation type: trimmed from reel, flexible.

Available materials - Product code examples

SIRL-...-...-... - galvanized steel sheet

SIRL-K-...-...-... - 1.4301/304 stainless steel sheet

SIRL-K-...-...-...-316L - 1.4404/316L stainless steel sheet

SIRL-A-...-...-... - aluminium sheet

SIRL-CU-...-...-... - copper sheet

Product code examples

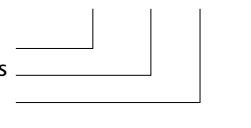
Product code: **SIRL - iii - aaa - bbb**

type

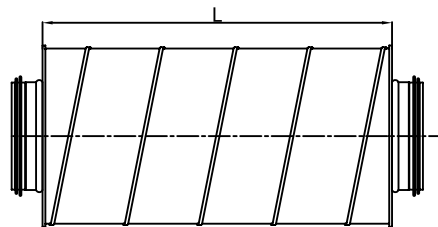
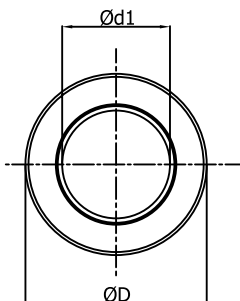
Insulation thickness

$\varnothing d_1$

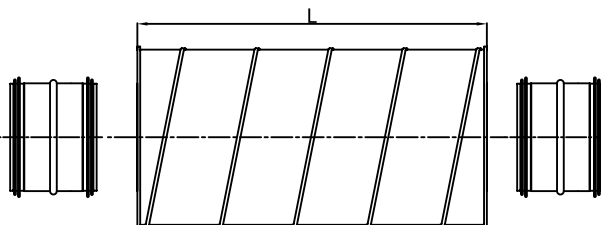
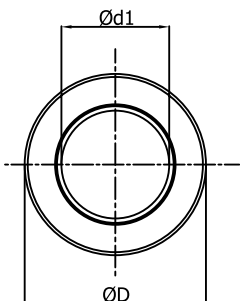
L



Dimensions



Cross-section for specific types of SIL and SIRL, $d_1 \leq 315$ mm.



Cross-section for specific types of SIL and SIRL, $d_1 > 315$ mm

Round silencers

SIRL**Dimensions****SIRL-100 - 100 mm insulation**

Description	$\varnothing d_1$ [mm]	D_{nom} [mm]	L [mm]	Sound insulation [dB] at frequency [Hz]						Weight [kg]
				125	250	500	1000	2000	4000	
SIRL 80-300	80	280	300	8	13	19	27	33	29	4
80-600	80	280	600	17	26	29	53	53	45	6
80-900	80	280	900	25	23	32	55	56	46	9
80-1000	80	280	1000	24	27	33	55	58	47	10
SIRL 100-300	100	300	300	6	12	18	23	28	23	5
100-600	100	300	600	13	23	34	46	52	40	8
100-900	100	300	900	17	30	39	54	55	46	10
100-1000	100	300	1000	19	36	39	56	51	40	11
SIRL 125-300	125	315	300	6	10	15	19	23	18	5
125-600	125	315	600	11	20	30	40	45	30	8
125-900	125	315	900	15	27	38	56	62	39	11
125-1000	125	315	1000	16	31	35	48	51	30	11
125-1200	125	315	1200	15	34	38	56	59	45	13
SIRL 160-300	160	355	300	4	8	12	16	21	14	6
160-600	160	355	600	9	16	28	33	37	21	9
160-900	160	355	900	11	24	35	49	51	27	12
160-1000	160	355	1000	12	25	38	54	54	29	14
160-1200	160	355	1200	12	29	41	56	57	33	16
SIRL 200-600	200	400	600	6	12	22	28	28	18	12
200-900	200	400	900	8	18	28	40	37	23	17
200-1000	200	400	1000	9	21	29	44	38	25	19
200-1200	200	400	1200	10	25	33	50	42	27	23
SIRL 250-600	250	450	600	5	12	20	24	23	14	14
250-900	250	450	900	6	17	30	34	28	17	20
250-1000	250	450	1000	7	18	31	36	30	18	20
250-1200	250	450	1200	9	22	35	39	33	20	26
SIRL 315-600	315	500	600	4	8	14	17	14	12	16
315-900	315	500	900	4	12	21	26	19	15	22
315-1000	315	500	1000	5	13	23	29	20	16	26
315-1200	315	500	1200	7	15	28	35	24	18	29
SIRL 400-900	400	600	900	5	12	19	22	18	13	29
400-1000	400	600	1000	5	13	22	24	20	14	31
400-1200	400	600	1200	7	16	22	29	22	15	36
400-1500	400	600	1500	9	20	32	35	24	17	43
SIRL 500-900	500	710	900	4	11	18	16	14	11	35
500-1000	500	710	1000	5	12	19	18	15	12	38
500-1200	500	710	1200	6	13	21	21	17	14	43
500-1500	500	710	1500	7	19	27	26	19	15	52
SIRL 630-900	630	900	900	5	8	14	12	13	9	44
630-1000	630	900	1000	5	10	15	13	14	10	49
630-1200	630	900	1200	6	13	18	15	15	12	56
630-1500	630	900	1500	7	15	23	18	17	13	69
SIRL 800-1000	800	1000	1000	4	8	11	9	9	8	70
800-1200	800	1000	1200	5	9	13	11	11	9	80
800-1500	800	1000	1500	6	12	17	14	14	11	88

SIRL-150 - 150 mm insulation

Description	$\varnothing d_1$ [mm]	D_{nom} [mm]	L [mm]	Sound insulation [dB] at frequency [Hz]						Weight [kg]
				125	250	500	1000	2000	4000	
SIRL 80-1000	80	400	1000	26	22	27	50	55	47	19
SIRL 100-1000	100	400	1000	25	36	42	59	53	47	21
SIRL 125-1000	125	450	1000	22	34	38	51	50	40	22
125-1200	125	450	1200	21	36	40	62	55	46	25
SIRL 160-1000	160	450	1000	16	28	40	51	52	28	22
160-1200	160	450	1200	17	33	44	58	56	32	25
SIRL 200-1000	200	500	1000	14	24	32	45	36	24	26
200-1200	200	500	1200	15	25	36	49	42	26	31
SIRL 250-1000	250	560	1000	12	22	31	37	31	18	30
250-1200	250	560	1200	15	26	36	41	34	20	35