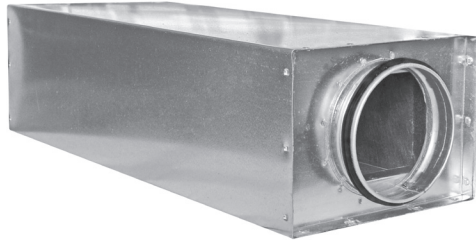


# Silencers

## SQQL-30



### Description

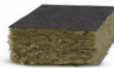
The SQQL-30 silencers are made of rectangular duct that constitutes an outer casing of the sound attenuator. The space between the outer and inner jacket (duct) is filled with 30 mm thick sound-proofing mineral wool or synthetic insulation. Possible made of galvanized steel, stainless steel, aluminum sheet or copper sheet.

#### Available versions:

- SQQL-30- ... - sound insulation from mineral wool with a glass fibre lining G9
- SQQL-AF-30-... - AIRFELT® sound insulation from recycled PET fibres
- SQQL-N-30- ... - sound insulation from mineral wool with a glass veil N3

#### Mineral wool properties:

- Thermal conductivity 0.037 W / mK at 10°C
- Reaction to fire class: **A1** according to EN 13501-1
- **G9 glass** fabric is mechanical resistant, can be cleaned with water, does not break. Air velocity up to 20 m/s without fibres peeling.



#### Polyester insulation properties:

- Airfelt insulation from recycled PET polyester fibres
- Working temperature: -30 + 80 ° C
- Thermal conductivity 0.038 W / mK
- Reaction to fire class: **B-s1, d0** according to EN 13501-1
- Can be cleaned with water, product not affected by humidity
- Meets the requirements of REACH
- Does not contain formaldehyde, pentachlorophenol

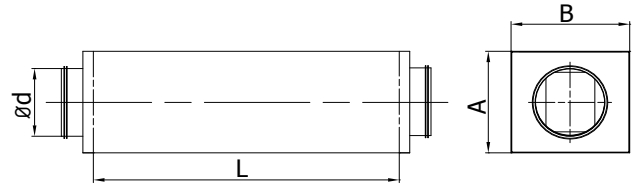


#### Product code examples

Product code: **SQQL-30 - aaa - bbb**

type \_\_\_\_\_  
 Ød \_\_\_\_\_  
 L \_\_\_\_\_

### Dimensions



Ød <sub>nom</sub> [mm]	A [mm]	B [mm]	L [mm]	Weight [kg]
100	150	150	600	3.2
100	150	150	900	4.6
100	150	150	1200	5.9
125	175	175	600	3.6
125	175	175	900	5.1
125	175	175	1200	6.6
160	210	210	600	4.6
160	210	210	900	6.4
160	210	210	1200	8.2
200	250	250	600	5.9
200	250	250	900	8.3
200	250	250	1200	10.7
250	300	300	600	7.3
250	300	300	900	10.0
250	300	300	1200	12.7
315	365	365	600	9.2
315	365	365	900	10.8
315	365	365	1200	12.4
400	450	450	600	11.4
400	450	450	900	15.5
400	450	450	1200	19.5
450	500	500	600	13.5
450	500	500	900	19.5
450	500	500	1200	22.5
500	550	550	600	14.0
500	550	550	900	19.8
500	550	550	1200	24.7
630	680	680	600	30.5
630	680	680	900	46.5
630	680	680	1200	37.5

# Silencers

## SQQL-30

$\varnothing d_{nom}$ [mm]	A [mm]	B [mm]	L [mm]	Weight [kg]
250	300	300	300	4.18
250	300	300	500	6.39
250	300	300	600	7.30
250	300	300	900	10.00
250	300	300	1000	11.01
250	300	300	1200	12.70
250	300	300	1500	15.56
315	365	365	300	5.26
315	365	365	500	8.05
315	365	365	600	9.20
315	365	365	900	10.80
315	365	365	1000	10.75
315	365	365	1200	12.40
315	365	365	1500	15.19
400	450	450	300	6.52
400	450	450	500	9.98
400	450	450	600	11.40
400	450	450	900	15.50
400	450	450	1000	16.90
400	450	450	1200	19.50
400	450	450	1500	23.89
450	500	500	300	7.73
450	500	500	500	11.81
450	500	500	600	13.50
450	500	500	900	19.50
450	500	500	1000	19.50
450	500	500	1200	22.50
450	500	500	1500	27.56
500	550	550	300	8.01
500	550	550	500	12.25
500	550	550	600	14.00
500	550	550	900	19.80
500	550	550	1000	21.41
500	550	550	1200	24.70
500	550	550	1500	30.26
630	680	680	300	17.45
630	680	680	500	26.69
630	680	680	600	30.50
630	680	680	900	46.50
630	680	680	1000	32.50
630	680	680	1200	37.50
630	680	680	1500	45.94

## Technical specifications

### Pressure loss [Pa] for SQQL-30 and SQQL-N-30

$\varnothing d_{nom}$ [mm]	L [mm]	2 m/s	4 m/s	8 m/s	10 m/s	12 m/s
100	300	0.4	1.5	6.2	9.6	13.9
100	500	0.4	1.7	6.9	10.7	15.5
100	600	0.4	1.7	7.0	10.9	15.7
100	900	0.5	1.9	7.7	12.0	17.3
100	1000	0.55	2.2	8.8	13.75	19.85
100	1200	0.6	2.5	9.9	15.5	22.4
100	1500	0.8	3.0	12.0	18.8	27.0
125	300	0.3	1.3	5	7.8	11.3
125	500	0.3	1.4	5.6	8.7	12.5
125	600	0.4	1.4	5.7	8.9	12.9
125	900	0.4	1.6	6.4	10.0	14.4
125	1000	0.5	2	8	12.5	18
125	1200	0.6	2.4	9.6	15.0	21.6
125	1500	0.7	2.9	11.6	18.1	26.1
160	300	0.3	1.1	4.2	6.6	9.5
160	500	0.3	1.2	4.7	7.4	10.6
160	600	0.3	1.2	4.8	7.6	10.9
160	900	0.3	1.4	5.5	8.6	12.4
160	1000	0.4	1.65	6.65	10.35	14.95
160	1200	0.5	1.9	7.8	12.1	17.5
160	1500	0.6	2.3	9.4	14.6	21.1
200	300	0.2	0.7	3	4.6	6.7
200	500	0.2	0.8	3.3	5.2	7.4
200	600	0.2	0.9	3.4	5.3	7.7
200	900	0.3	1.0	4.1	6.4	9.2
200	1000	0.35	1.3	5.25	8.2	11.8
200	1200	0.4	1.6	6.4	10.0	14.4
200	1500	0.5	1.9	7.7	12.1	17.4
250	300	0.2	0.8	3.2	4.9	7.1
250	500	0.2	0.9	3.5	5.5	7.9
250	600	0.2	0.9	3.6	5.7	8.2
250	900	0.3	1.1	4.3	6.8	9.8
250	1000	0.35	1.4	5.45	8.6	12.35
250	1200	0.4	1.7	6.6	10.4	14.9
250	1500	0.5	1.9	7.5	11.8	16.9
315	300	0.1	0.5	2.1	3.3	4.8
315	500	0.1	0.6	2.4	3.7	5.4
315	600	0.2	0.6	2.5	3.9	5.6
315	900	0.2	0.8	3.2	5.0	7.2
315	1000	0.25	1.1	4.35	6.8	9.8
315	1200	0.3	1.4	5.5	8.6	12.4
315	1500	0.4	1.7	6.6	10.4	14.9

# Silencers

## SQQL-30

$\varnothing d_{nom}$ [mm]	L [mm]	2 m/s	4 m/s	8 m/s	10 m/s	12 m/s
400	300	0.1	0.4	1.5	2.4	3.5
400	500	0.1	0.4	1.7	2.7	3.9
400	600	0.1	0.4	1.8	2.8	4.0
400	900	0.2	0.6	2.5	3.8	5.5
400	1000	0.25	0.9	3.65	5.6	8.1
400	1200	0.3	1.2	4.8	7.4	10.7
400	1500	0.4	1.6	6.2	9.7	14.0
450	300	0.1	0.3	1.4	2.2	3.1
450	500	0.1	0.4	1.5	2.4	3.5
450	600	0.1	0.4	1.6	2.5	3.6
450	900	0.1	0.6	2.3	3.6	5.2
450	1000	0.2	0.85	3.45	5.35	7.75
450	1200	0.3	1.1	4.6	7.1	10.3
450	1500	0.4	1.5	6.0	9.3	13.4

$\varnothing d_{nom}$ [mm]	L [mm]	2 m/s	4 m/s	8 m/s	10 m/s	12 m/s
500	300	0.1	0.3	1.2	1.9	2.7
500	500	0.1	0.3	1.3	2.0	2.9
500	600	0.1	0.3	1.4	2.2	3.1
500	900	0.1	0.5	2.1	3.2	4.7
500	1000	0.2	0.8	3.2	5	7.25
500	1200	0.3	1.1	4.3	6.8	9.8
500	1500	0.4	1.4	5.8	9.0	13.0
630	300	0.1	0.3	1.2	1.8	2.6
630	500	0.1	0.3	1.3	2.0	2.9
630	600	0.1	0.3	1.3	2.1	3.0
630	900	0.1	0.4	1.7	2.6	3.8
630	1000	0.15	0.7	2.85	4.4	6.4
630	1200	0.2	1.0	4.0	6.2	9.0
630	1500	0.3	1.2	4.8	7.5	10.8

### Sound insulation [dB] for SQQL-30 and SQQL-N-30

$\varnothing d$ [mm]	L [mm]	63 Hz	125 Hz	250 Hz	500 Hz	1k	2k	4k	8k
100	300	1	4.6	3.6	14	32.6	36.4	21.8	11.4
100	500	4.4	6.7	4.3	15.5	34.8	38.7	24.5	12.7
100	600	5.1	7.6	4.7	16.2	35.8	39.7	25.7	13.3
100	900	12.5	9.5	5.2	17.5	38.1	41.9	28.2	14.5
100	1000	13.05	9.95	5.7	18.3	38.95	43.05	29.5	15.1
100	1200	13.6	10.4	6.2	19.1	39.8	44.2	30.8	15.7
100	1500	15.7	12	6.8	20.5	42.7	47.7	33.8	17
125	300	0.9	4	3.2	12.6	29.7	33.6	19.1	10.1
125	500	3.8	5.8	3.8	13.9	31.7	35.7	21.5	11.2
125	600	4	9	3	13	30	37	24	13
125	900	11.3	8.6	4.7	15.9	34.9	38.8	25.2	13.1
125	1000	12	9.15	4.9	16.2	35.2	39.25	25.7	13.3
125	1200	12.7	9.7	5.1	16.5	35.5	39.7	26.2	13.5
125	1500	14.6	11.2	5.6	17.7	38.1	43	28.8	14.6
160	300	0.8	3.4	2.7	11.1	26.6	29.2	16.5	8.8
160	500	3.3	4.9	3.3	12.2	28.4	31	18.6	9.8
160	600	3.9	5.8	3.6	12.9	29.4	31.9	19.8	10.4
160	900	6.8	5.2	5.4	15.7	34.2	33.8	21	10.4
160	1000	10.2	7.8	5.3	15.8	33.8	35.05	22.9	11.55
160	1200	13.6	10.4	5.2	15.9	33.4	36.3	24.8	12.7
160	1500	15.6	12	5.7	17	35.8	39.2	27.2	13.8

# Silencers

## SQQL-30

Ød [mm]	L [mm]	63 Hz	125 Hz	250 Hz	500 Hz	1k	2k	4k	8k
200	300	0.6	2.5	2.2	9.4	25.4	26.4	15.6	8
200	500	2.5	3.7	2.7	10.4	27.1	28	17.5	8.9
200	600	3.1	4.7	3	11	28	29	18.6	9.5
200	900	8.6	6.6	3.6	12.3	30.3	31.1	21.1	10.7
200	1000	10.25	7.85	4.1	13.15	31.2	32.25	22.35	11.3
200	1200	11.9	9.1	4.6	14	32.1	33.4	23.6	11.9
200	1500	13.8	10.5	5	15	34.4	36.1	26	12.9
250	300	0.6	2.4	2.1	8.8	21.1	20.8	12.5	6.8
250	500	2.4	3.5	2.5	9.7	22.6	22.1	14.1	7.6
250	600	3	4.4	2.9	10.3	23.5	23.1	15.3	8.1
250	900	8.4	6.4	3.4	11.7	25.8	25.2	17.8	9.3
250	1000	10.05	7.7	3.9	12.5	26.65	26.35	19.1	9.9
250	1200	11.7	9	4.4	13.3	27.5	27.5	20.4	10.5
250	1500	13.2	10.1	4.8	14.1	29	28.8	21.9	11.2
315	300	0.5	2.1	1.6	7	17.3	16.4	11	5.9
315	500	2	3	1.9	7.7	18.5	17.4	12.4	6.6
315	600	2.6	3.9	2.2	8.4	19.5	15.2	13.6	7.2
315	900	7.7	5.9	2.8	9.7	21.8	17.4	16	8.4
315	1000	9.4	7.2	3.3	10.55	22.65	18.55	17.25	8.95
315	1200	11.1	8.5	3.8	11.4	23.5	19.7	18.5	9.5
315	1500	12.6	9.6	4.2	12.2	24.9	21	20.2	10.3
400	300	0.4	1.9	1.7	7.1	14.5	11	9.8	5.3
400	500	1.9	2.8	2	7.8	15.5	11.7	11	5.9
400	600	2.2	3.3	2.2	8.2	16	12	11.6	6.2
400	900	6.8	5.2	2.8	9.5	18.3	14.1	14.1	7.5
400	1000	8.45	6.45	3.3	10.3	19.15	15.25	15.35	8.05
400	1200	10.1	7.7	3.8	11.1	20	16.4	16.6	8.6
400	1500	11.7	9	4.1	12	21.5	17.7	18.2	9.4
450	300	0.4	1.9	1.7	7.3	12.9	9.8	9.6	4.9
450	500	1.8	2.7	2.1	8.1	13.8	10.4	10.8	5.5
450	600	2.1	3.1	2.3	8.4	14.2	10.7	11.4	5.8
450	900	6.6	5	2.9	9.7	16.5	12.8	13.9	7
450	1000	8.25	6.3	3.4	10.55	17.4	13.95	15.15	7.55
450	1200	9.9	7.6	3.9	11.4	18.3	15.1	16.4	8.1
450	1500	11.5	8.8	4.2	12.2	19.7	16.4	18.1	8.9
500	300	0.4	1.7	1.5	6.3	12.4	8.6	8.5	4.7
500	500	1.6	2.4	1.8	7	13.3	9.1	9.6	5.2
500	600	1.9	2.8	1.9	7.3	13.7	9.3	10.1	5.5
500	900	6.1	4.7	2.5	8.6	16	11.4	12.6	6.7
500	1000	7.8	5.95	3	9.4	16.85	12.55	13.85	7.3
500	1200	9.5	7.2	3.5	10.2	17.7	13.7	15.1	7.9
500	1500	11.1	8.5	3.8	11	19.2	15	16.7	8.6
630	300	0.5	2.1	1.5	6.3	12	7.9	8.7	4.8
630	500	2	3	1.8	6.9	12.8	8.4	9.8	5.3
630	600	2.3	3.5	2	7.3	13.2	8.7	10.3	5.5
630	900	5.6	4.3	2.2	7.8	13.9	9.1	11.2	6
630	1000	7.25	5.55	2.7	8.6	14.8	10.25	12.45	6.6
630	1200	8.9	6.8	3.2	9.4	15.7	11.4	13.7	7.2
630	1500	10.3	7.9	3.5	10.1	16.8	12.3	15.1	7.8